

Material List:

- (1) Sellstrom replacement Ratchet Headgear *
- (1) 3/4" x 1-1/2" x 3" Oak or other hardwood
- (1) #10 x 3/4" long round head wood screw
- (1) #8 x 1/2" long round head wood screw
- (1) #10 flat washer
- (4) 1/2" long brad nails
- (1) 1/4" x 24" aluminum rod or tubing
- (1) Slip-on pencil eraser

Optional Stylus Clamp Materials:

- (1) 1/2" x 1" x 1" aluminum block
- (1) 1/4" flat washer
- (1) 1/4-20 x 1/2" long wing bolt

* Visit your local welding supply or contact Sellstrom at (800) 323-7402 to locate a dealer near you

Instructions:

1. Obtain items in the materials list
2. Fabricate Stylus Tubes and Attach Block as shown on sheet 2XXXX
3. If desired, fabricate optional Stylus Clamp as shown on sheet 3XXXX
4. Locate Attach Block between Headband and the Attachment Strap on Headband and secure with #10 wood screw and washer (see picture 1 page 4XXXX)
5. Drill (4) pilot holes evenly spaced through the Headband into the Attach Block and attach using brad nails (see picture 2XXX page 4XXX)
6. Insert Stylus Clamp into Attach Block and drill 1/8" pilot hole as shown on sheet 2XXXX, then secure with #8 screw (see picture 3 page 5XXX)
7. assemble Stylus Clamp if used
8. Press eraser over end of Stylus
9. Bend Stylus as desired

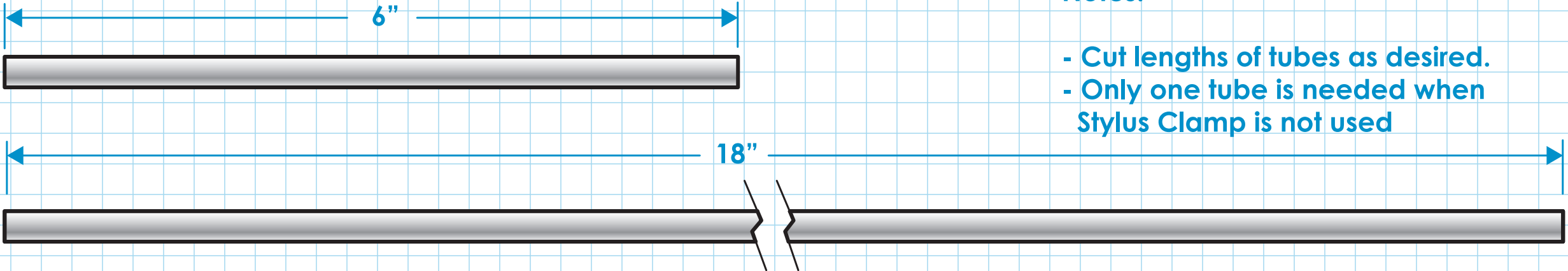
Project Name: Head Wand

Drawing Name: Materials & Instruction
Submitted By: J. Weisman
Scale: 1:1
Date: 11.6.13

Sheet #: 1/3
Rev: A

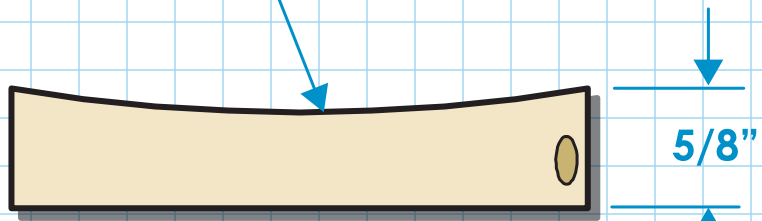
Notes:

- Cut lengths of tubes as desired.
- Only one tube is needed when Stylus Clamp is not used



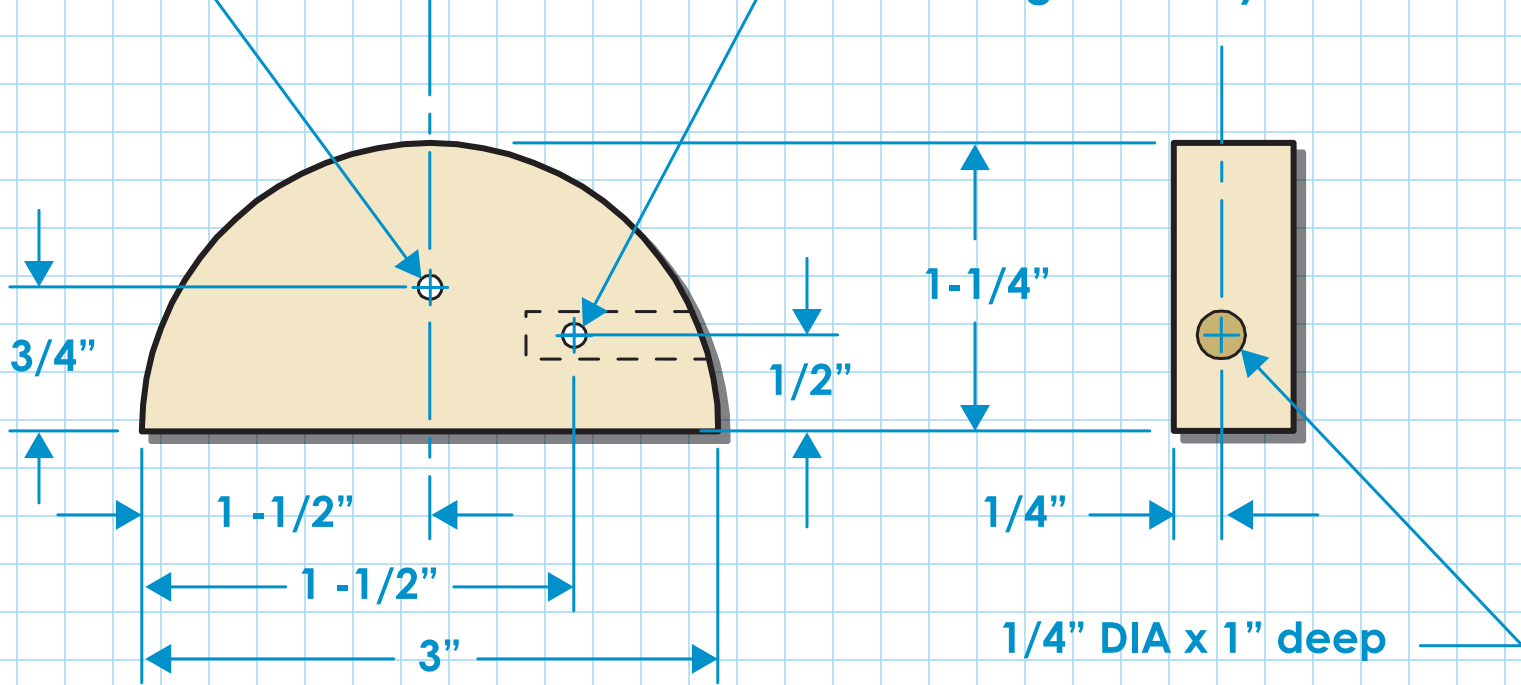
Stylus Tubes - Use 1/4" Dia aluminum rod or tube

Sand to fit Headband contour



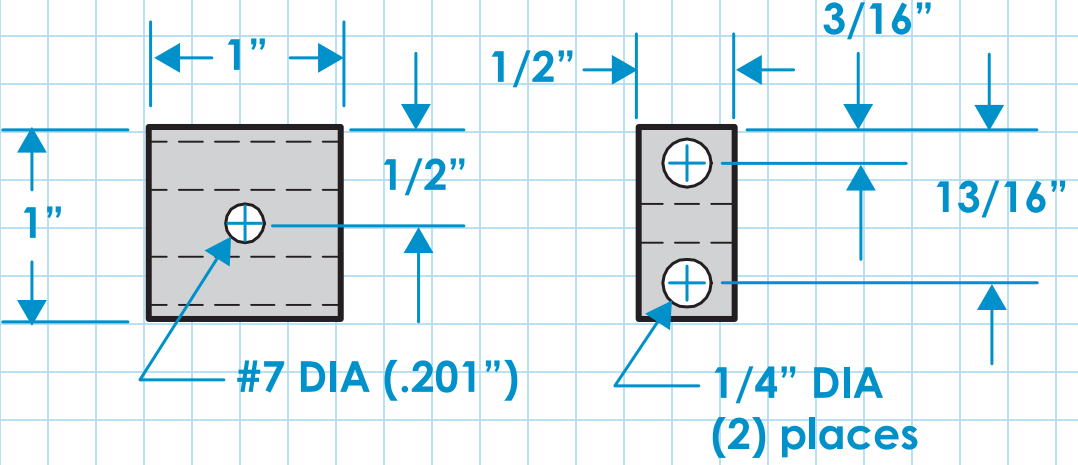
1/8" DIA pilot hole for #10 x 3/4" long wood screw

1/8" DIA pilot hole for #8 x 1/2" long wood screw through wood and tubing during assembly

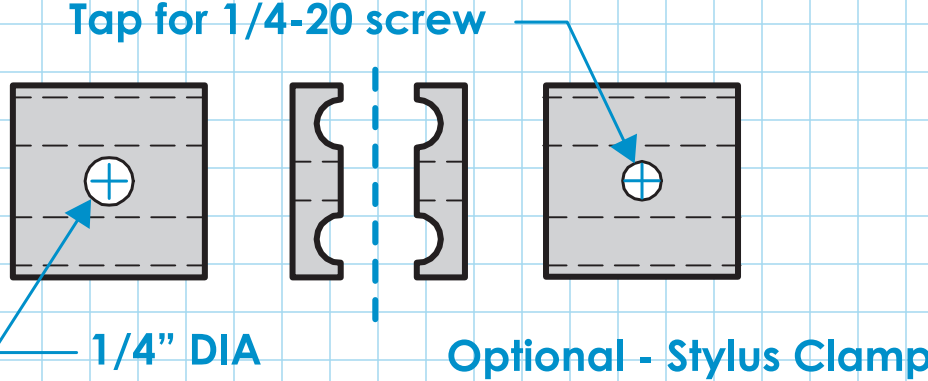


Attach Block - Make from wood block

Step 1 - Make block as shown



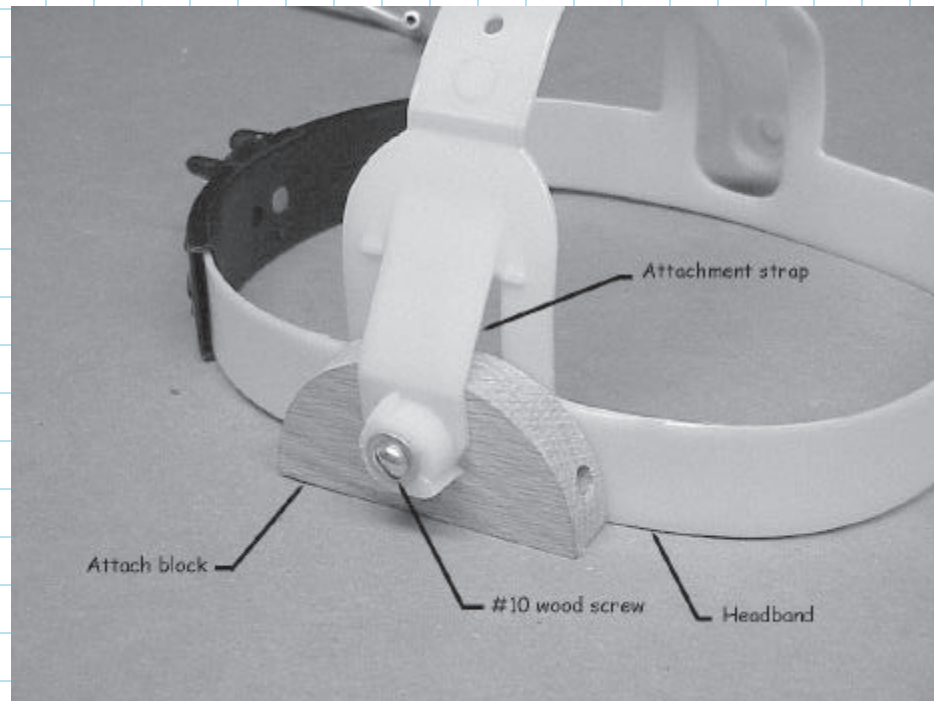
Step 1 - Saw block in half as shown
Re-drill hole in one half of block to 1/4" DIA
Tap hole in the other half to 1/4-20



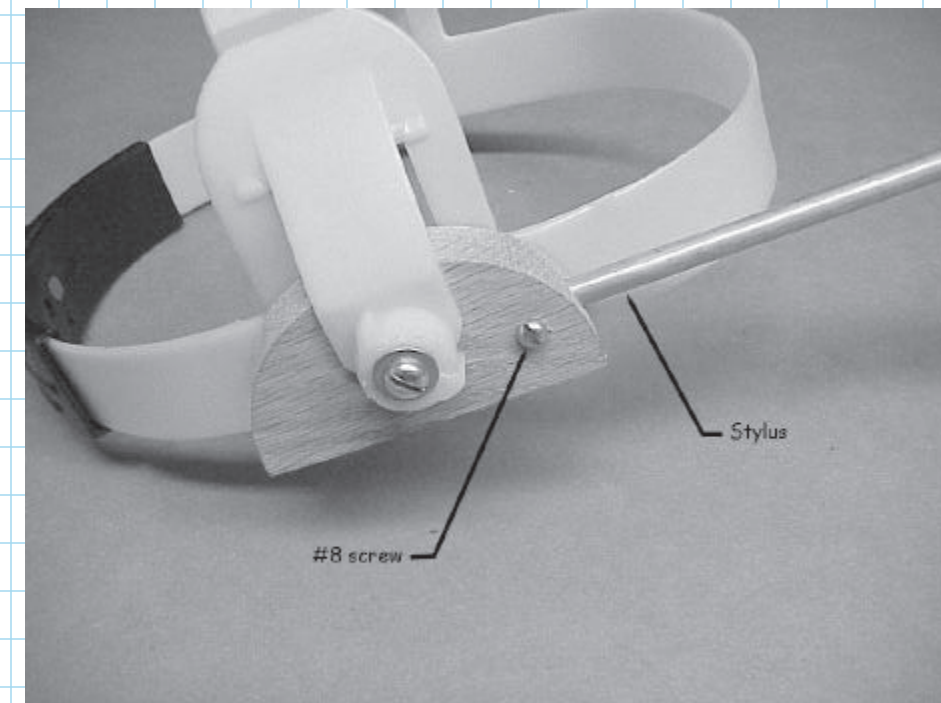
Project Name: Head Wand

Drawing Name: Part Details
Submitted By: J. Weisman
Scale: 1:1
Date: 11.6.13

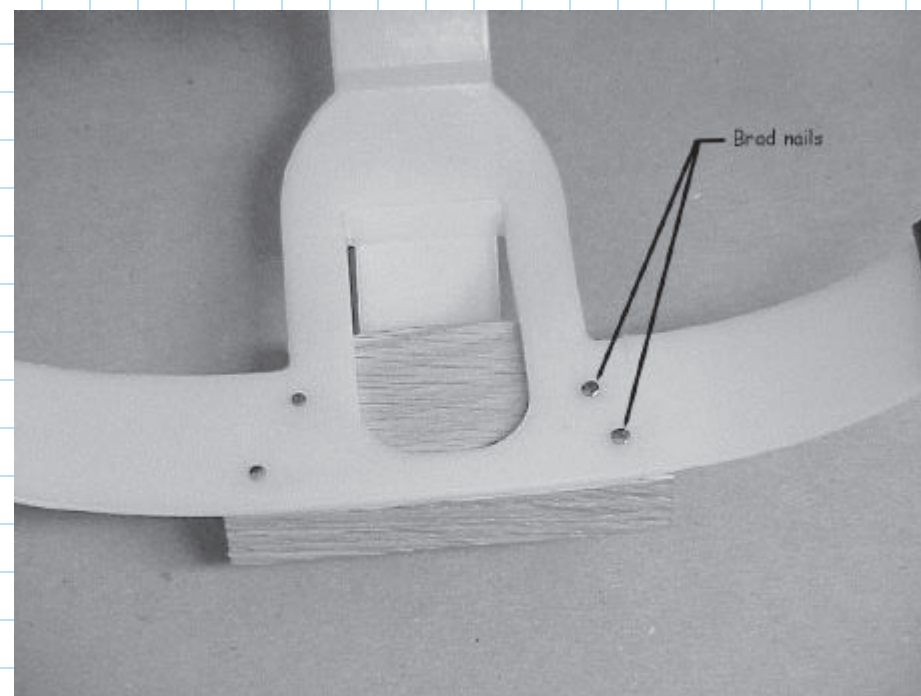
Sheet #: 2/3
Rev: A



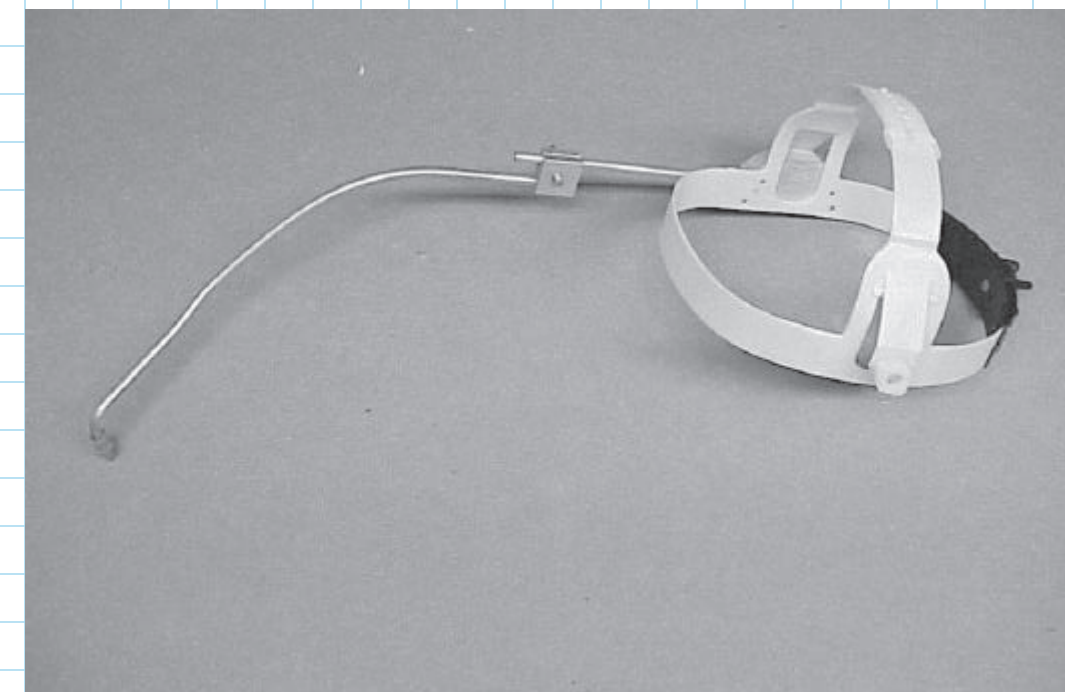
Picture 1 Attach Block location



Picture 3 Stylus attachment



Picture 2 Brad nails installation



Picture 4 Finished Head Wand

Project Name: Head Wand

Drawing Name: Assembly Photo's

Submitted By: J. Weisman

Scale: 1:1

Date: 11.6.13

Sheet #: 3/3

Rev: A